

# Contour Protégé AI+

Revolutionise your cancer  
treatment with our new

## AI-ASSISTED AUTO CONTOURING SOFTWARE

### WHAT ARE THE BENEFITS?



#### AI-Driven Precision

Uses advanced AI  
to create highly accurate  
treatment plans



#### Consistent and Reliable

Ensures consistent results  
across all patients



#### Efficient and Time-Saving

Automates time-saving processes,  
allowing your care team  
to focus more on you



#### Continuous Improvement

AI that learns and evolves to  
provide the best possible care

## RADIOTHERAPY PROCESS

1

### Treatment Decision

Clinical assessment,  
diagnostic and  
histological information for  
treatment determination



2

### Radiotherapy Preparation

#### Simulation Imaging

Tumour volume and  
normal tissue contouring

#### AUTO CONTOURING

Highly accurate and  
consistent organ contouring



#### MANUAL CONTOURING

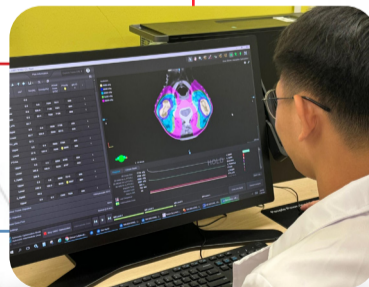
Needs more time to shape and  
check every organ properly

takes only  
**10 MINUTES**

takes up to  
**5 HOURS**

#### Treatment Planning

Dose calculation  
determines the optimal  
radiation to treat tumours  
while minimising harm  
to healthy tissue




3

### Radiotherapy Delivery

Patient receives treatment



FOR FURTHER ENQUIRIES, CONTACT US:

 **+6019-297 1185**

