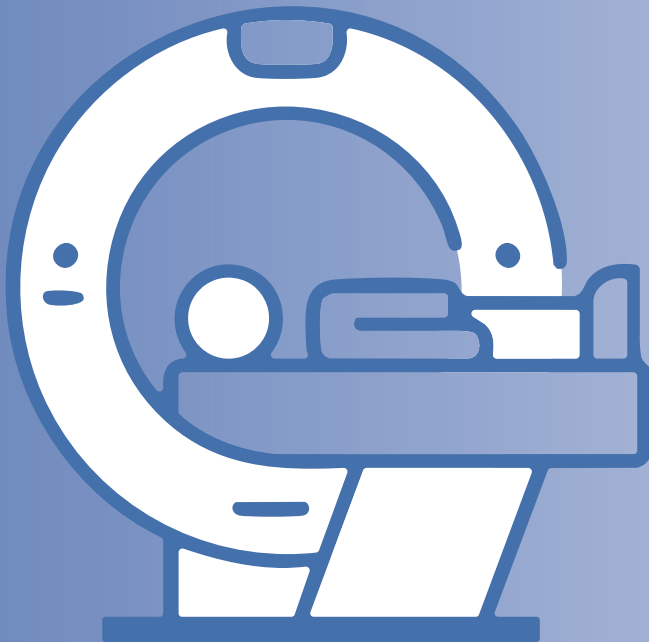




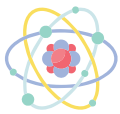
GALLIUM-68 PSMA (PROSTATE-SPECIFIC MEMBRANE ANTIGEN) SCAN

PATIENT EDUCATION

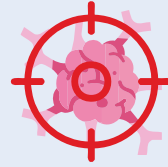


Gallium-68 PSMA (Prostate-Specific Membrane Antigen) Scan

What is Gallium-68 (Ga-68) PSMA Scan?



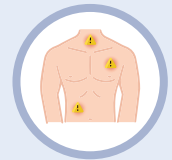
A Ga-68 PSMA Scan is a type of positron emission tomography (PET) scan that uses a **radiopharmaceutical (Ga-68 PSMA)** that binds specifically to **PSMA proteins** that highly-expressed on prostate cancer cells.



This scan allows highly sensitive and specific visualisation of PSMA-positive cancer cells in the body, enabling detection of:



**Primary
Prostate Cancer**



Metastases



**Recurrent
Disease**

Do I Need to Prepare for this Scan?



There is **NO** specific preparation for your scan, however it is recommended to **drink plenty of water** before the scan to ensure adequate hydration.

Advantages of Ga-68 PSMA Scan

1

Higher Specificity and Sensitivity for Prostate Cancer

Ga-68 PSMA binds specifically to PSMA proteins overexpressed in prostate cancer cells, leading to **sharper contrast between tumors and background tissues compared to FDG**, which measures general glucose metabolism and is less prostate cancer-specific.

2

Superior Detection of Small and Recurrent Lesions

PSMA PET can **identify small, early, or recurrent prostate cancer lesions** that often go undetected by FDG PET or conventional imaging methods, improving staging and treatment planning.

3

Enables Theranostic Applications

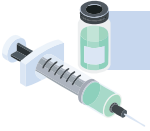
Ga-68 PSMA PET is used to select patients for targeted radionuclide therapy with therapeutic isotopes (e.g., Lutetium-177 labelled PSMA), **linking diagnosis and personalised treatment**.

Risk and Limitation

- ✓ You might get a bruise around injection site.
- ✓ Side effects from the injection are not common, but some patients may get a skin rash, headache, upset stomach, vertigo or dizziness.

How Does the Ga-68 PSMA Scan Work?

The procedure is simple and non-invasive. Here's what you can expect:

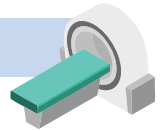


Injection of Ga-68 PSMA on the Scanning Bed

A small amount of radioactive substance (Ga-68) will be injected into a vein, usually in your arm.

The First Scan

A **10 minutes pelvic scan** will be done right after the injection.

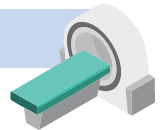


Waiting Time

After the first scan, you'll need to wait for about **50 minutes**. This gives the radioactive substance time to travel through your body and bind to the other areas of interest.

The Second Scan

You'll lie down on the same PET scanner bed while the scanner **takes images of your whole body**. The scanner is like a large camera that captures detailed pictures of where the Ga-68 has travelled in your body.



Duration

The scan usually takes **10 to 15 minutes**.

After the Scan

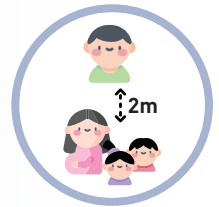


You can eat normally, and it is recommended to **drink plenty of water** after the scan to ensure adequate hydration.

This is important because it helps in eliminating the radioactive substance from the body more efficiently after the scan.

Since the radioactive tracer injected is in a very small amount, therefore keeping a distance from other people after the examination is not necessary.

However, you are advised **NOT** to have close contact with pregnant ladies, younger children and babies at least 6-8 hours after the scan.



In the meantime, our Nuclear Medicine Physician will review the scan and **prepare your reports**.

It may take some time to reach your referring doctor or be ready for collection. We will inform accordingly once the report is ready.

For more information, kindly contact us at:

 +603-7494 1017

 +603-7491 1483

 smc@sunway.com.my

The Nuclear Medicine Centre is located at:
Basement, Tower C

Operation Hours

Mondays-Fridays 8.30am - 5.30pm

Saturdays 8.30am - 12.30pm

Closed on Sundays and Public Holidays