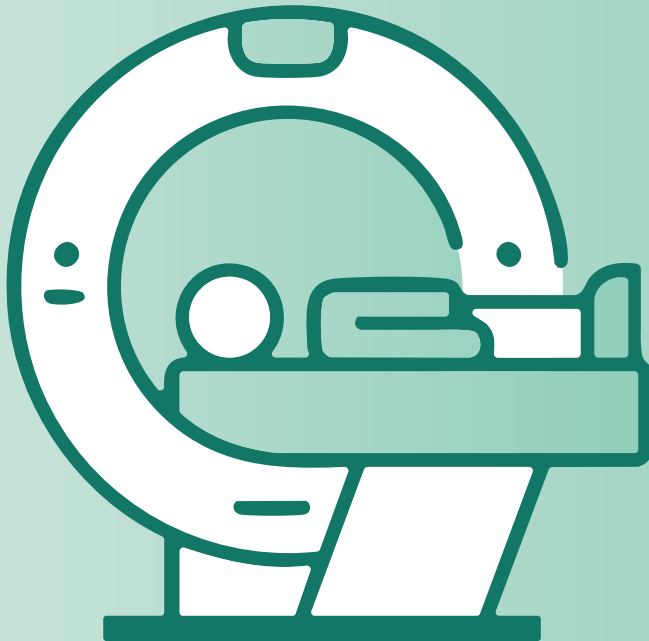




PARATHYROID SCAN

PATIENT EDUCATION

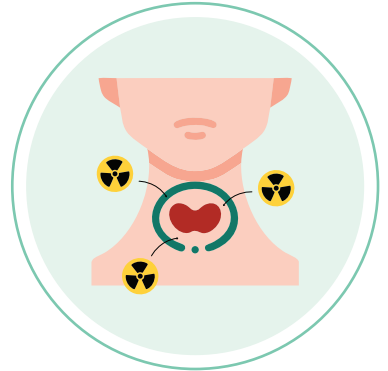


Parathyroid Scan

What is Parathyroid Scan?

A parathyroid scan is also known as a Sestamibi scan or MIBI scan. It is a nuclear medicine imaging test that **uses a small amount of a radioactive tracer to identify enlarged or abnormally located parathyroid glands**, which control blood calcium levels.

The scan is primarily used to locate a parathyroid tumour called an adenoma and helps guide surgical decisions for minimally invasive procedures.



Advantages of Parathyroid Scan



A parathyroid scan's primary advantage is the precise localisation of abnormal, overactive parathyroid glands before surgery. This facilitates a less invasive procedure, reduces complications, and improves treatment outcomes.

Risk and Limitation



The scan is generally considered safe with no significant risks.

How is A Parathyroid Scan Performed?

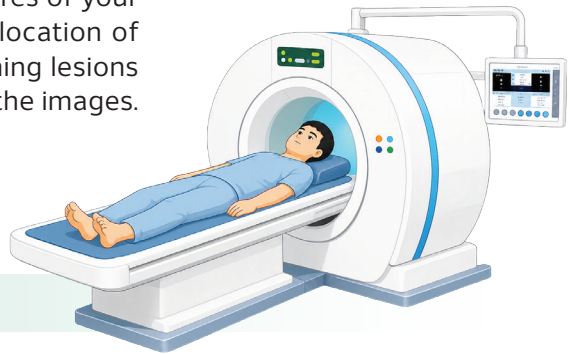
1 Radioactive Tracer Injection



You will receive an injection of a small amount of a radiotracer, typically **Tc-99m MIBI**, into a vein in your arm. The tracer is absorbed by any overactive parathyroid glands.

Imaging 2

A gamma camera takes pictures of your neck and chest to show the location of the tracer, with hyperfunctioning lesions appearing brightly on the images.



3 SPECT/CT



Often, a SPECT (single photon emission computed tomography) or CT scan is performed simultaneously to create 3-D images and add precision to the localisation.

Additional scans are usually taken **2 hours** after the initial injection.



Preparation for the Scan

There is no special preparation necessary before the scan. You may eat and drink as normal.



When Will You Get the Reports?

The physician's report will be ready shortly after your scan, but it might take some time to reach your referring doctor or be available for pickup. It's usually ready by the end of the day.

The interpretation and explanation of results shall be provided by the physician-in-charge.



Pregnancy and Lactation

If you are pregnant or suspect you might be, please inform our staff before the procedure.

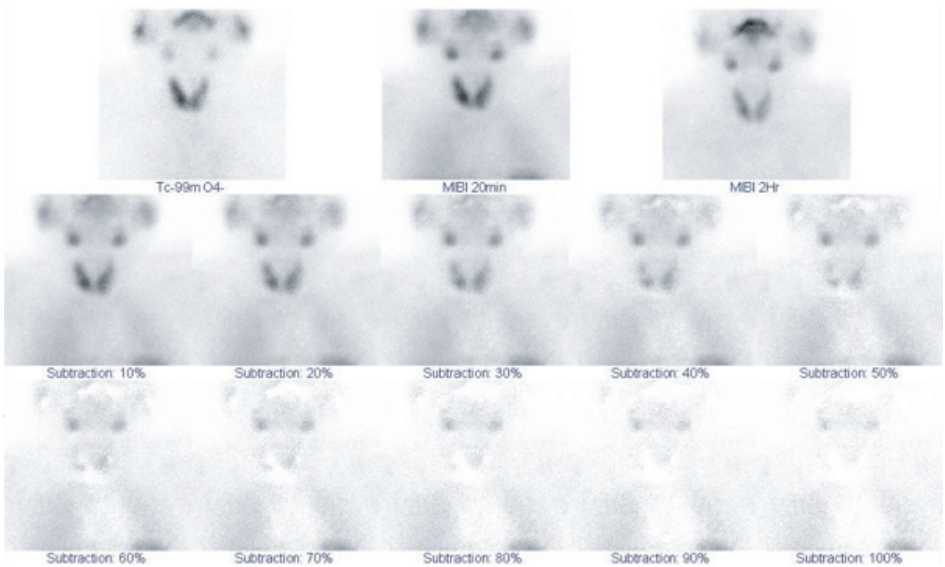
For breastfeeding mothers, it is recommended to **stop breastfeeding for 24 hours** after scan.

During this time, you should express and discard your breast milk. You may resume breastfeeding once the recommended time has passed.



Subtraction Images for Parathyroid Scan

These subtraction images help to accurately localise overactive parathyroid gland(s) for better diagnosis and treatment planning.






What do these images show?

The subtraction images are taken at different time intervals to identify areas of persistent tracer uptake, which may indicate overactive parathyroid gland(s).



For more information, kindly contact us at:

-  +603-7494 1017
-  +603-7491 1483
-  smc@sunway.com.my

The Nuclear Medicine Centre is located at:
Basement, Tower C

Operation Hours

- Mondays-Fridays 8.30am - 5.30pm
- Saturdays 8.30am - 12.30pm
- Closed on Sundays and Public Holidays